

St. Philip Information and News (SPIN)

November 19, 2025



Worship News

Advent Readers

We are looking for people to read during the lighting of the Advent Wreath on Sunday mornings during Advent. We encourage all to consider this: families with young children, families with older children, couples, groups of singles, etc. Contact Jan Philpy if you have questions or to sign up.

Children's Christmas Program

**Joy to the World-A Christmas Program with our Children and Youth
Sunday, December 7 @ 9am service**

This Christmas season, we are excited to announce our special program titled "Joy to the World"—a celebration led by the voices and hearts of our children and youth. Christmas is more than lights, gifts, and carols—it is the story of Jesus, the greatest gift of all. And who better to share this story than our young ones, whose faith and joy remind us of the wonder of that holy night?

All children & youth are invited to be a part of this special program. We will continue to rehearse our songs, music, etc. on Sunday Mornings from 10:15 - 11:15am in the Fellowship Hall.

We will also be adding some additional rehearsal times to include all of our kids: For the next two Sundays (11/23 and 11/30) during worship the kids are invited to join Ms. Melinda in the Fellowship Hall immediately following "Children's Conversation" in the service. We will rehearse songs for the Christmas program, and the kids will return to the Sanctuary during the offering.

You do not have to attend all of the rehearsals to be a part of our program. We would love to include all of our children & youth! For questions please reach out to Melinda.

Church News

The Great Can Quest: Youth in Action!

This November, our youth group is launching **The Great Can Quest**—a friendly, high-energy competition with a powerful purpose. Three teams will go head-to-head to collect the most canned goods and non-perishable items, all to help support families in our community who are facing food insecurity during the holiday season. Every can counts, and every donation helps bring warmth and nourishment to a neighbor in need. Join us in cheering on our youth as they rally together with compassion, creativity, and a whole lot of canned goods! **Drop-off bins will be available through November 30. Let's stack those shelves and spread some love! All food items collected will be given to Sharing with Sheridan.**



Most requested items for families at Sharing with Sheridan:

Canned tuna
Rice
Dry pinto and black beans
Pasta
Canned carrots and corn
Salt and pepper
Canned pineapple
Cooking oil
Ketchup
Flour
Cereal
Honey

Sugar
Canned black beans
Canned tomato sauce
Corn and flour tortillas
Applesauce
Maseca

Specific Items needed by November 23:

Stuffing
Cranberry Sauce
Gravy

Thanksgiving Eve Worship & Pie Social

Please join us on **Wednesday, November 26** for a church service at **6pm** and our annual pie social following worship. Everyone is welcome whether you bring a pie or not, but we hope that some of you will wow us with your homemade pies! Store-bought pies are okay too!

Silver Sages Christmas Fest

Wednesday, December 3 at church from 11:30am to 1:30pm

Silver Sages is a social group for seniors of St. Philip. We hope you will join us for a delicious ham dinner, fun and fellowship. Please bring a \$5 to \$10 wrapped "White Elephant" gift purchased from a thrift store. Please label whether your gift is for male, female or either. There is a sign-up sheet located in the narthex. Our deadline is Sunday, November 30. For more information contact Liz Reed at 303-638-8704.

Church Christmas Decorating & Potluck

Have you put up your Christmas tree yet? Advent is just around the corner! The first Sunday of Advent is November 30 and we are going to decorate the church and sanctuary for Christmas on **Wednesday, December 3**. Everyone is invited to join us to decorate for Christmas. We will begin at **6:00pm** with a potluck soup supper and then decorate the church.

Volunteer Opportunities/Donations/Service

Dipes and Wipes

Please come join us at Dipes and Wipes here at St. Philip on **Saturday, November 22 from 9:30 - 11:30am**. We will be greeting parents coming in to get their diapers and praying with them. Please use the site below to let us know you are coming. Contact Penny Selden if you have any questions. (303-601-9525)
<https://www.signupgenius.com/go/409084AA5AE2DA75-60413794-dipes>

Sharing with Sheridan Food Pantry

It was a beautiful day in the neighborhood as we gathered to serve **171** families (542 neighbors). We are blessed and ever so grateful for the outpouring of volunteer support and donations we've received during the SNAP benefit suspension; our pantry

shelves are filled and there is little we need for the coming week. Our Thanksgiving distribution will occur on Tuesday, November 25, and we are trying to offer culturally relevant foods for all our neighbors. To that end, we welcome donations of P.A.N. corn flour in addition to other items that are your holiday favorites. Your support is a blessing to our neighbors.

SwS will be distributing turkeys for Thanksgiving to our neighbors next Tuesday. If you would like to donate a frozen turkey or a whole chicken (for those who can't use a turkey), please bring it to church by Sunday, Nov. 23 and place it in the freezer in the kitchen.

Holy Hammers - Mountain View Homes Dedication Celebration

This development of 20 affordable homes built on land donated by Mt. View United Presbyterian Church in Aurora was recently dedicated with a celebration enjoyed by residents, Habitat staff, community supporters and volunteers. Several St. Philip members worked on the site during construction and Holy Hammers raised over \$50,000 to support the build.

Griffith Station is Coming Up!

Our next project will be Griffith Station near I-70 and Wadsworth in Arvada. This is a 1.2 acre development of 20 affordable homes with 3 and 4 bedrooms. The official groundbreaking was on Aug. 28th and we expect to have work dates available in mid-November.

In the meantime there are lots of other Habitat for Humanity opportunities indoors AND outdoors - get in touch with Rich Allee and we'll find something that works for you! We can also arrange a date for your work, social or service group to volunteer together - it's a great team builder!

Bible Study/Small Groups (Ongoing)

Monday

Monday Morning Women's Bible Study

Monday Morning Women's Bible Study meets the 1st & 3rd Monday of each month from 9-11am in the Fireside Room. We will be continuing the Matthew Bible study that we started last year. Study by Warren W. Wiersbe, *Be Loyal-Following the King of Kings* (version that has the **dog** on the front cover). Contact Juli Cooley with questions. (jhcool519@gmail.com)

Book Club

Invitation for book readers! Come join us for lively discussion and fellowship in BOOK CLUB. We meet the second Monday from 9:30-11am in the Fireside Room. For further information contact Sue Miller at 303-619-0661 or sue.miller50@comcast.net; or Beth Faerber at 570-574-5243 or efaerber@hotmail.com.

Prayer Shawl Group

Prayer Shawl Ministry meets the 2nd Monday of the month at church in the Fireside Room at 1pm. For more information contact Linda Tegeder.

Pub Theology

Pub Theology is not your traditional Bible study; it is a gathering of people who drink beer (or root beer or water) and talk about life and faith. There are different brews and there are different views, so come join the conversation and hang out with us. We meet at Locavore Beer Works (5950 S Platte Canyon Rd., Littleton) on the left side of the brewery **Mondays at 6:35pm**. If you have questions, please contact Pastor Brad.

Tuesday

Tuesday Night Bible Study

Every Tuesday Night from 7-9pm

Meeting at the Selander Home (6338 S Harlan Way in the Leawood subdivision)
Or join us on Zoom. Call Paul at 303-241-0321 for the link.

Our study continues with the history, culture, and language of the Old and New Testaments. This year we will begin with Traditions in the Church as well as the Jewish Festivals and how they involve the Messiah. From there we will explore the Torah, starting with Genesis. Each week Rudy Swenson leads the discussion of these fascinating areas of study. Please come and join us whenever you can. Any questions call Paul at 303-241-0321.

Wednesday

Wednesday Morning Women's Bible Study

Meets the 2nd and 4th Wednesdays of the month at church from 9:30 to 11:00am. Our study will be the Book of John, which focuses on proving that Jesus is the Christ, the Son of God, and Jesus's life and ministry. We hope you will join us. Contact Chris Youngren at 303-973-3096 or ctyoungren@gmail.com for more information.

Wednesday Morning Men's Bible Study

The Wednesday morning Men's Bible Study meets on the 2nd and 4th Wednesdays from 9:30-11am in the Youth Room. For more information, contact Bill Colbenson at 720-381-3348.

Men's Group Pizza Night

Join the men's group for pizza, conversation and fellowship! Pizza Nights are on the 2nd and 4th Wednesday of each month from 6-7pm in MC-4/5. Come have a bite and join in the fellowship!

Wednesday Night Women's Bible Study

We hope you will be able to join us for the Women's Bible Study - Week 23 - in A Beautiful Year in the Bible. Again, we will meet at **6:30pm tonight in MC-3**. Reminder: We will NOT meet on Wednesday, November 26, since there will be an evening church service followed by a pie social for Thanksgiving. Blessings to all.





<p>Preparing for Worship - November 23, 2025 Christ the King Sunday</p>
--

<p>First Reading: Jeremiah 23:1-6</p>
--

<p>Second Reading: Colossians 1:11-20</p>
--

<p>Gospel Reading: Luke 23:33-43</p>

<p>Worship Servants for Sunday, November 23, 2025</p>	
--	--

<p>Assisting Minister</p>	<p>Jan Philpy</p>
----------------------------------	-------------------

<p>Lector</p>	<p>Linda Tegeder</p>
----------------------	----------------------

<p>Communion Servants</p>	<p>Jim Smith, Anne Henning</p>
----------------------------------	--------------------------------

<p>Sacrament Servants</p>	<p>Sandi Stevermer, Beth Clough</p>
----------------------------------	-------------------------------------

<p>Greeters</p>	<p>Darlene Dethlefs, Cyndi Perry</p>
------------------------	--------------------------------------

<p>Ushers</p>	<p>Charlie Petersen, Mike Werner</p>
----------------------	--------------------------------------

<p>Key Keeper</p>	<p>Week beginning Nov. 23: Tom Schnickel</p>
--------------------------	---

Our Prayer List

On Wednesdays a more detailed prayer list is released via email. If you would like to be added to this list, please contact Angela Seep at aseep@stphilip-co.org or 303.979.4491. Prayer requests will run for two weeks unless otherwise requested.

St. Philip Community

JoAnn Breitbach, Jeanne Rasmussen, Karen Morin, Betty Welch, Rob Murphy

Family Members

Gail Plagman (Karen Otto's sister)
Al Votaw (Sandi Stevermer's brother-in-law)
Hunter Pierson (Sophia Hassman's brother)
Jack Thomson (Sandi Stevermer's cousin)
Mark Davis (Mike Rhodes' cousin)
Brianna Van Gorder (Marilyn Belford's granddaughter)
Ginger Schnickel (LeRae & Tom Schnickel's sister-in-law)

Lauren Person (Mary Flatley's daughter)
Barbara (Karen Otto's niece)
Erik Hanson (Martha Hanson's son)
Margy Crary (Anne Krause's aunt)
Laura Hughes (Nancy Schell's daughter)
Jim Flatley (Tom Flatley's brother)
Clarissa Lee (Sharon Peters' niece)
Tim Booth (Tom Booth's brother)

Friends

Scott (Reed)
Dave (Anderson)
Kassi Moy (Hensley)
Family & friends of Austin (Haggenjos)
Linda Page (Stevermer)
Cathy (Anderson)

Nicole (Anderson)
Danielle (Anderson)
Kathy Buddy (Shibly)
Lisa Wycoff (Burgess/Mossbrucker)
Ryan Gaibler (Thomas)

Prayers of remembrance and love for all our homebound members, those with health issues, and those who worship from home.

Prayers of strength, hope, and peace for caregivers and healthcare workers.

Prayers for healing and comfort for those suffering with physical issues, mental injuries, anxiety, and depression.

Prayers for those who are insecure about food, shelter, and acceptance. Prayers for people who live in fear of discrimination and violence.



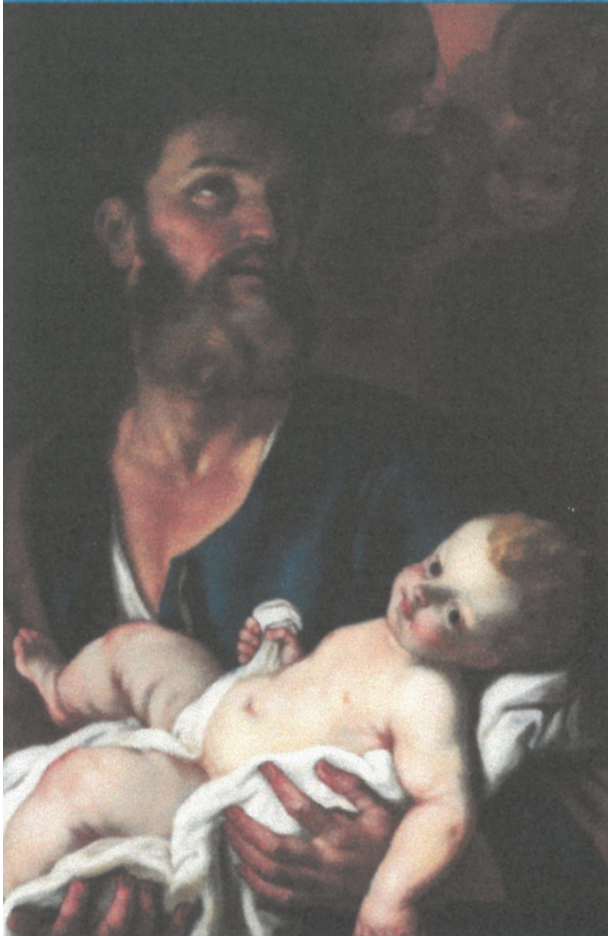
Calendar of Events

November 19-30, 2025

Wednesday, November 19 6:00p – Confirmation (FH, FH-2, Chapel) 6:00p – Sr. High Youth Group (FH, YR, Chapel) 6:30p – Wed. Eve. Women's Bible Study (MC-3) 6:30p – Choir Rehearsal (Sanc.)	Tuesday, November 25 1:00p – Mahjong Group (YR) 1:15p – SPLC Worship Planning (MC-3) 1:45p – SPLC Staff Meeting (MC-3) 7:00p – Bell Rehearsal (Sanc.) 7:00p – Boy Scouts (FH) 7:00p – Tues. Night Bible Study (offsite)
Thursday, November 20 7:30a – Men's Breakfast (offsite) 1:45p – SPELC Staff Meeting (MC-4/5) 7:30p – Prayer Team (Zoom)	Wednesday, November 26 9:30a – Men's Bible Study (YR) 9:30a – Women's Bible Study (MC-1) 6:00p – Thanksgiving Eve Service (Sanc.) 7:00p – Pie Social (FH, Kitchen) 7:00p – Littleton Gem & Mineral (MC-3)
Friday, November 21 <i>Church office open 9am-noon</i> 11:45a – Flute Trio Rehearsal (YR) 7:00p – Bell Rehearsal (Sanc.) 7:00p – Littleton Gem & Mineral (FH)	Thursday, November 27-Thanksgiving Day Church office closed
Saturday, November 22 9:00a – Piano Recital (Sanc.) 9:00a – Youth Food Drive Collection (parking lot) 9:30a – Dipes and Wipes (Narthex, MC-4/5, YR, Chapel) 10:30a – Al-Anon (MC-3)	Friday, November 28 Church office closed
Sunday, November 23 9:00a – Worship 10:15a – Sunday School (FH) 10:15a – Faith & Fellowship-6th-12th grades (YR) 11:30a – Sunday Confirmation Class (FH-1a/b) 3:00p – Sedalia Spurs (MC-4/5)	Saturday, November 29 10:30a – Al-Anon (MC-3)
Monday, November 24 5:45a – Walk with Jesus 6:35p – Pub Theology (offsite)	Sunday, November 30 9:00a – Worship 10:15a – Sunday School (FH) 10:15a – Faith & Fellowship-6th-12th grades (YR) 10:30a – Adult Faith Formation (MC-4/5)

St. Philip Lutheran Church and Early Learning Center
 7531 S. Kendall Blvd. Littleton, CO 80128
 303-979-4491 www.stphilip-co.org

FREE CONCERTS



WELCOME JOYOUS SEASON!

"The Hands That First Held
Mary's Child"

Sunday
December 7, 2025

2:00 pm

Concordia Lutheran Church

13371 W Alameda Pkwy.
Lakewood, CO

5:30 pm

Covenant Living of Colorado

9153 Yarrow St
Westminster, CO



The Lutheran Choral



We are not selling tickets but appreciate your free will offerings.

Visit www.thelutheranchorage.org for more information.

